



Snowjourner

Bringing together the people of the Springfield Ski and Travel Club



August 1

**Dew Chili
Pub and Grill**

2690 S. Dirksen Parkway, Springfield

COCKTAILS 5:30 | DINNER 6:00

Please make reservations before Wednesday noon by contacting Tom and Karen Hafel at kmhafel76@comcast.net or call 546-0236.

Happy Hour

August 15 • 5 to ? pm

Prop Club

**264 MAPLE GROVE
SPRINGFIELD**

**No food service available, appetizers are welcome.
Information will be available for upcoming trips
and sports leagues.**



*If you have moved or plan to, please contact the VP for Membership for a change of address.
Your Snowjourner cannot be forwarded due to bulk rates.*

Published by the Springfield Ski Club, A Not-for-Profit Corporation

Please deliver to:

RETURN SERVICE REQUESTED

Snowjourner
Springfield Ski Club
P.O. Box 1146
Springfield, IL 62705



Presort Standard
U.S. Postage Paid
Springfield IL 62705
PERMIT #639

August 2019

The Dining Out Group always meets the 1st Thurs of each month kmhafel76@comcast.net
 Springfield Ski Club Board meets every 2nd Thursday of the month
 The SSC Happy Hour is ALWAYS the 3rd Thurs of the month

Sunday	Monday	Tuesday	Wednesday	Thursday	Friday	Saturday
28	29 FUN GOLF Pasfield Golf Course, 4:45	30	31 COMPETITIVE GOLF Rail Golf Course, 4:20-5:15	1 DINE OUT Dew Chili	2	3
4	5 FUN GOLF Pasfield Golf Course, 4:45	6	7 COMPETITIVE GOLF Rail Golf Course, 4:20-5:15	8 Board Meeting 5:30 VFW, Old Jax Rd.	9	10
11	12 FUN GOLF Pasfield Golf Course, 4:45	13	14 COMPETITIVE GOLF Rail Golf Course, 4:20-5:15	15 HAPPY HOUR Prop Club	16	17
18	19 FUN GOLF Pasfield Golf Course, 4:45	20	21 COMPETITIVE GOLF Rail Golf Course, 4:20-5:15	22	23	24
25	26 FUN GOLF Pasfield Golf Course, 4:45	27	28 COMPETITIVE GOLF Rail Golf Course, 4:20-5:15	29	30	31

2019/2020 Springfield Ski and Travel Club Board

President

Richard Griminger
 president@springfieldskiclub.org
 Cell: 217-652-4363

Executive Vice-President

Mike Bloechle
 vicepresident@springfieldskiclub.org
 Cell: 217-787-1010

Treasurer

Misty Dannenberger
 treasurer@springfieldskiclub.org
 Cell: 217-553-3057

Finance Chair

Terri Marbold
 finance@springfieldskiclub.org
 Cell: 217-741-7734

Secretary

Joyce Metz
 secretary@springfieldskiclub.org
 Cell: 217-816-4123

VP for Membership

Pennie Stevens
 membership@springfieldskiclub.org
 Cell: 217-416-5143

VP for Tour Trips

Patty Staab
 vptourtrips@springfieldskiclub.org
 Cell: 217-836-4406

VP for Day Trips

Jaime Francis
 vpdaytrips@springfieldskiclub.org
 Home: 217-529-8564

VP for Winter Trips

Jim Hamrick
 vpwintertrips@springfieldskiclub.org
 Cell: 217-553-6195

VP for Activities

Sandy Frank
 activities@springfieldskiclub.org
 Cell: 217-652-6315

Publicity Chair

Linda Hammer
 PublicityDirector@springfieldskiclub.org

Happy Hours Chair

Karen Kuhar
 karenkuhar115@gmail.com
 Cell: 217-971-8900

Dine Outs Chair

Tom & Karen Hafel
 kmhafel76@comcast.net
 Cell: 217-546-0236

Snowjourner Editor

Caroline Porter Evans
 snowjourner@springfieldskiclub.org
 Cell: 309-221-2330

Skier Development - SKI Representative

Gary Kindred
 skierdevelopment@springfieldskiclub.org
 Cell: 217-341-9231

Community Service Chair

Betsy Miller
 communityservice@springfieldskiclub.org

Sports Chair

Jan Joyce
 sportschair@springfieldskiclub.org
 Cell: 217-741-1147

MESSAGE FROM THE PRESIDENT

There was an old song that I was thinking of tonight as I lay outside on my recliner, under the pergola, smoking my Padron cigar on a beautiful July night. It is an old Ray Stevens song, and a couple of the verses are as follows:

Everything is beautiful in its own way
 Like a starry summer night or a snow covered winter's day
 Everybody's beautiful in their own way
 Under God's heaven, the world's gonna find a way
 There is none so blind as he who will not see
 We must not close our minds, we must let our thoughts be free
 For every hour that passes by, you know the world gets a little bit older
 It's time to realize that beauty lies in the eyes of the beholder

Everybody feel better after you talk to them than they did before you spoke to them'. I always remembered that and tried to live by that thought. I realize that sometimes I go overboard with wacky positive compliments to you all, but in sincerity, I actually mean what I say. When I used to drop my kids off at school in their much younger years, the last thing I would say, everyday, as they hopped out of the car was "Be nice to everyone".

We just came back from a wonderful day trip, PEORIA ADVENTURES. It was a fantastic time, and expertly put on by Carol and Theresa. Thank you for a wonderful job! It was peaceful and relaxing, and helped make my membership in the club even more memorable. It was not being in Peoria, but it was being with a great group of warm, friendly people. That is what I enjoy about the club and the membership. Sign up for a day trip, pool league, overseas trip or ski trip. Happy hours and parties. They are all comforting due to the people there.

Hoping you all enjoy the remainder of the summer, and that your air conditioning keeps on working! Looking forward to seeing you all again soon!

Rick Griminger
 President

I was thinking to myself, life is good and there is a lot of good in everyone. My father once told me 'Try to make ev-



Hey, have you heard?? Roger's Oktoberfest is just 2 months away! Please note the date: Sunday October 13, 2019.

August Birthdays

John Goleman..... 1	Rosemary Weistart 15	John Simpson..... 22
Sascha Millard 3	Doug Field 15	Charles E. Traylor..... 22
Doreen Books 3	Andy Grapes 15	Frances King..... 22
Ernie DeFrates 3	Rich Jachino..... 16	Lynn Burger..... 23
David Kalaskie..... 4	Susan Long..... 17	Wayne Rovey..... 23
Lew Bird..... 4	Jim Stahl 17	Marilyn Thomas 24
Bob Dettling 4	Louie Midiri..... 18	Ruth Kopec 24
Judith Telford 4	Sharon Weiser..... 18	Bryan Johnsrud 25
Dan Petrone..... 8	Diane Long 19	Don Schaefer 27
Drinda O'Connor 9	Rich Hunter 19	Kathy Summer 29
Carol Weller..... 9	David L. Elder..... 19	Kathy Cutler 29
Margaret Schwarz..... 10	Linda Butler..... 21	Charlotte Montgomery 30
Michael Londrigan..... 11	Susanna Voigts..... 21	Randy Bower 30
Jon Roth..... 12	Ken Foard 21	Michael Brownlow..... 31
Earl H. Woodrum 12	Kay Ryan 21	

MESSAGE FROM THE VICE PRESIDENT FOR ACTIVITIES

FALL SIGN UP PARTY

This is the semi-annual opportunity for members to sign up for all the day and tour trips highlighted in this August newsletter as well as all club activities. This event will be held at the picturesque Aqua Sports Club on 1 Club Area, Springfield, IL (just off W. Lake Shore Drive). Members will be allowed to gather as early as 4:30 and the Membership table will be open at that time. The bar will be open! There will be plenty of room both inside and outside (weather permitted).

Sign-up for trips and activities will open at 5:00 and con-

tinue until 7:00. Prior to this time, only board members, trip leaders, and those assisting with the party will be allowed into the sign-up area.

A meal will be provided starting at 6:00. Then stick around as the REAL PARTY begins with music and dancing to our DJ from 7:00 – 10:00!

Sandy Frank
Vice President for Activities

September 4

Pool League Begins, Mowie's Cue

September 7

Fall Sign-up Party, Aqua Sports Club

September 9-17

Edinburgh, Scotland and London, England

September 14

S.K.I. Golf Outing,

September 21

Cub V. Cardinals game, Chicago

October 13

Oktoberfest at Roger Schnelten's

October 26

Hallowe'en Party

February 1-8

Grand Palladium White Sands, Mexico

March 22-April 3

Exploring Portugal



Details Inside

Welcome New Members



Gail E Zappo

Jeri Lynne Wright

Constance Locher Bussard

Susan Fisherkeller

Gary Stockton

Mary Schackmann



POOL LEAGUE



Join our weekly games in a league environment that is fun and relaxed. Teams play in a rotating schedule against all other teams. Scores are handicapped to level the playing field, making play fun for newbies and experienced players alike.

WHEN? Wednesdays, September 4 - December 18

- ⑧ **September 4 is the kickoff. Sign in between 6:00 – 6:30 pm.**
 - ▶ Come as early as 6:00 to practice and socialize.
 - ▶ *Be signed in and ready to form teams by 6:30.*
 - ▶ Play the first round of official games.

Mowie's needs all players to be signed in by 6:30, even if they already have a team.
- ⑧ Subs are encouraged to attend the first night. You might be needed to sub. Or you might wish to join a team as an extra player to rotate in or serve as their go-to sub.
- ⑧ If any regular players cannot play the first night, they may arrange for another ski club member to sub. Make-up games cannot be scheduled. Any person not signed up at the first night is welcome to have their name added to the sub list.
- ⑧ Regular play continues September 11 with reserved tables available at 6:00 pm for practice and games starting at 7:00 pm.
- ⑧ A Scotch Doubles Tournament will be held December 18.



Who can play?

Any adult Springfield Ski & Travel Club member, beginners to experts. We need a minimum of 16 regular players to create at least four 4-person teams or 18 players for six 3-person teams. The more the merrier! Teams will be finalized the first night based on players in attendance by 6:30. Subs also are needed.

Where?

Mowie's Cue
Toronto Road, just east of I-55

What's the cost?

\$8 per person per week. This covers all the official games, plus any practice games beforehand and open play afterwards, as well as special food nights and prizes. A smaller fee is charged for the December 18 Scotch Doubles tournament.

How do I sign up?

- At the July or August happy hour, or
- Via mail: send the application by August 24 to Lynn Burger, 3916 Waterstone Way, Spfld. IL 62711, or
- At the League kickoff night at Mowie's Cue, September 4, 2019

FOR MORE INFO CONTACT:

Lynn Burger
Burgs252@gmail.com





Fall

SIGN-UP PARTY

SATURDAY, SEPTEMBER 7 • 4:30 TO 10:00

AQUA SPORTS CLUB 1 Club Area, Springfield, Illinois

- At 4:30 pm only the Board Members, Trip Leaders and those assisting with the party will be allowed into the sign up area.
- At 4:45 pm only Board Members and Trip Leaders will be allowed to sign up.
- Once all Board Members and Trips Leaders have signed up (by approximately by 5:00 pm), then those members with 10 hour certificates (only one trip per 10 volunteer hours) will be allowed to sign up.
- Once those 10 hour certificate members have had the opportunity to sign up (by approximately 5:15 pm) then the numbers will be used.
- When the numbers have been exhausted, general sign up will occur at approximately 5:30 pm to 5:45 pm.

MEMBERSHIP REQUIREMENTS:

Your membership must be current and in good standing to allow you to sign up for any trip or activity. The Membership Table will be available starting at 4:30 pm. The Membership VP will be available to sign up new members, member renewals, updating directory information, and assisting with other membership issues.

SIGN-UP PROCEDURES:

- ▶ No early sign up sheets will be available.
- ▶ Members may line up at 4:30 pm and numbers will be handed out at that time. A number will be given for each trip. When you enter the trip sign up area, please sign up for only the numbered trip assigned and any Day Trip or activity.
- ▶ You can sign up yourself and up to one other member in good standing for any trip or activity.
- ▶ Everyone must complete a trip application form and have payment available for any trip for each person you will be signing up, including yourself. A copy of the Trip Application Form is included in the newsletter and can also be printed on the Springfield Ski and Travel Club website. **PLEASE COMPLETELY FILL OUT EACH APPLICATION AHEAD OF TIME INCLUDING MEMBERSHIP NUMBERS AND PASSPORT NUMBERS IF REQUIRED.**
- ▶ Payment Rules: A separate check is required for each trip or activity. If you are signing up more than one person for a particular trip, one check can be used. Checks should be made out to the Springfield Ski and Travel Club.
- ▶ At approximately 5:30 pm the Sergeant of Arms (Executive Vice President or designee) will form lines for each trip according to the numbers handed out. At that time the Trip Leader or designee will process your trip application form and check. Please remember that other members who are entitled to early sign up privileges may have already signed up for the trip. Hence, your name may not be first on the Trip Leaders sign up sheet even if you have the number one.
- ▶ If a member is entitled to early sign up (Officer, Trip Leader, or member with 10 hours of volunteer time) he/she can only sign themselves up. These people cannot sign up two people unless they receive a number and wait in line like everyone else. You cannot sign up your spouse, significant other, etc. even if you are an Officer, a Trip Leader, or a member with 10 hours of volunteer time.
- ▶ All trips and activity tables will be open until 7:00 pm.

Michael Bloechle

Executive Vice President and Sergeant of Arms

PEORIA ADVENTURE REPORT

On July 13th thirty-five of our members enjoyed a day of adventure in Peoria. First stop was the Spirit of Peoria river boat cruise. The weather was perfect for a river boat ride, as the breeze off the river was refreshing. We enjoyed beverages and shared stories. There was a narrator telling about historical Peoria events, but Rick Griminger grew up there so he added some fun stories of his own!

Lunch and craft beer was next at Obed and Isaac's, with games of bags, ping pong, and giant jenga (tense match between Kathleen Sorensen and Judi Nesbitt!) afterward in their beautiful large beer garden. The restored church that held the restaurant was an amazing building, although it felt a little weird to be drinking a beer under the beautiful stained glass window!

After Obed's came another craft beer experience at Pour Brothers where you can pour your own with 16 different taps



to choose from. A few of us sneaked in a little boutique shopping a few doors down, and a few of us visited a lovely little wine bar called The Hearth around the corner.

Lastly, some of the more adventurous members tried their luck at the Paradise casino. There were a few big money winners!

We had a couple of members that were handicapped by ortho boots, but our bus driver Sonny was super and did his best to make their walks as short as possible. A very fun adventure in Peoria indeed!

Theresa Endris and Carol Johnson,
Trip Leaders

PROPOSED STANDING RULE 15 AS PROPOSED AND ACCEPTED BY THE EXECUTIVE BOARD ON 7-15-19

Policy on Trip Deviations

Rationale:

The club already has a policy on trip deviations for ski trips (Standing Rule #8) and I think we need to have one for tour trips as well. Recently, some of our vendors have allowed travelers to deviate from the published trip itinerary.

New Standing Rule:

- 1)** For trips involving a deviation including requests to delete air, only the actual cost of the group air ticket will be deducted from the trip price. The participant's portion of the club's overhead cost, including ground transportation to the airport or rail station used for the trip, as well as any other included trip costs will be included in the partial trip price.
- 2)** A deviation occurs when a traveler makes any changes from the published trip itinerary including but not limited to: change to departure and/or return date, departing or returning to a different airport, adding a stopover in another location, requesting a land only package.
- 3)** All requests for partial trip packages will only be honored to the point where the Club may drop reserved seats and rooms

without penalty from the tour operator and/ or the carrier.

- 4)** If a request for a partial trip participation is made and honored, the adjustment will be made on the last payment. A "partial" trip payment is not refundable unless the trip is canceled. The club will not refund or attempt to "resell" partial trip packages should the participant drop from the trip any time after signup.
- 5)** Any traveler wanting to deviate from the published trip is responsible for making their own arrangements for the deviation. If the deviation follows the same routing it may be possible for the trip vendor to assist with air or lodging. Ex. Go early &/or stay longer at the beginning stop or end stop of the published trip. The trip leader is not responsible for making these arrangements.
- 6)** A deviation means that the traveler will be responsible for getting to the meeting place of the group on their own and on a deviation on the return the traveler needs to make their own arrangements to get to the airport & back to Springfield.
- 7)** Requests for trip deviations must be made no later than 2 weeks after signup.

Presented by: Ski Council of Illinois (SKI)
Bloomington/Normal Ski Club, Champaign Ski & Adventure Club, Peoria Ski Club, Springfield Ski Club



A Day of FUN and GOLF!

Saturday, September 14 2019

First Group tees off at 11:00 a.m.

Lincoln Greens, 700 E Lakeshore Dr Springfield

Beginners and Experienced Golfers Welcome

18 HOLES! Best position

When you RSVP, we will construct foursomes to have all levels of golfers and mix of golfers from all four ski clubs. A- Superior B- Good C -Novice
What a great way to meet new people, make new friends and have **FUN**.

Men tee off from _____ tees and over 65 and ladies from _____

Note: Only paid golfers will be allowed in carts on the course.

Cost: \$35.00 includes 18 holes, motorized cart,

Prizes will be awarded for low team score, longest putt, longest drive (men and women). Most prizes will be random drawings of everyone who is golfing.

Note: No money due at the time of sign-up. Be prepared to pay at the golf course the day of the event. Arrive 60 minutes before your assigned tee time to pay and get all necessary information for the day and hit your bucket of balls.

EVERYONE NEEDS TO BE IN THEIR CARTS AND READY TO TEE OFF 10 MINUTES BEFORE THEIR TEE TIME. CARTS WILL BE ASSIGNED (NAMES WILL BE ON THE CARTS)

Sign up by: Saturday August 31

- Saturday

Club Members – contact to sign up

Bloomington/Normal- Carol Drake-309-530-4484-carollee216@hotmail.com

Springfield Club Members –Gary Kindred-garykindred55@gmail.com

Peoria Club Members – Carol Ferino-kcd413@comcast.net

Champaign Club Members – – Tony Curcio coachtony14@msn.com

Please provide them with this information:

- Name, phone number and e-mail address
- **Level of golfing ability**

Please let us know if you are A- Superior B- Good C -Novice

- Joining us for dinner? Yes/No

Dinner and awards will be at Engrained Microbrewery-1120 W Lincolnshire Blvd

Once we have a list of everyone who's interested, you will receive an e-mail with directions to the course, your assigned tee time, and any additional information necessary for the day.

EDINBURGH & LONDON

September 9-17, 2019

TRIP CO-LEADERS:

Diane Long - 217/737-8643

Joan Gardner - 217/341-2540

PRICE: \$2875/person depending on the number of travelers (26 minimum,

double occupancy with 40 maximum.

Single Supplement - \$583 added to the price of the trip.

Single Supplements will be extremely limited.

TRIP INCLUDES:

- Bus transportation to and from O'Hare Airport
- Air transportation to Edinburgh Airport and from London Heathrow
- Train transportation from Edinburgh to London
- Three nights in Edinburgh at a 3-star hotel – portorage for one bag
- Four nights in Central London at a 4-star hotel – portorage for one bag
- Airport transfers, government taxes, fees, airline fuel surcharges included but subject to change
- Motor coach transportation throughout the trip
- English speaking guide throughout the trip
- Two full-day tours in Edinburgh, two full-day tours in London and one half-day tour in London
- Cruise on Loch Lomond with tea/coffee and shortbread during the cruise
- Breakfast daily, 2 lunches and 4 dinners
- Gratuities for included meals, bus driver, and tour guides. Gratuities for other services such as housekeeping, room service, etc. are the responsibility of the traveler.

Included Activities (entry fees included for these activities):

- Panoramic tour of Edinburgh
- Visit to Edinburgh Castle (part of Old and New Towns of Edinburgh World Heritage Site) and Palace of Holyroodhouse
- Visit to Stirling Castle, Stirling Bridge and Bannockburn
- Cruise on Loch Lomond which is in Trossachs National Park (tea/coffee and shortbread included)
- Dinner and entertainment at the Spirit of Scotland Show (or similar)
- Panoramic tour of London past The Houses of Parliament, Big Ben, Westminster Abbey, Buckingham Palace, Trafalgar Square, Nelson's Column and Marble Arch
- Visit to the Tower of London (UNESCO World Heritage Site)
- Visit to St. Paul's Cathedral
- Daytrip from London to Stonehenge and the Roman Baths in Bath
- Experience the Changing of the Guard
- Visit to the British Museum

Trip Insurance: The Springfield Ski Club strongly recommends the purchase of trip insurance covering accident, sickness or death of a participant or covered family member that would result in cancellation either prior to or during the trip. Trip insurance is available from Alpine Adventures (<https://purchase.april-usa.com/alp/single-trip>) but you can use other insurers as well. Trip insurance should be purchased as soon as possible to ensure complete coverage.

PAYMENTS:

- Deposit at sign-up on April 27, 2019: \$950 – Single Supplement add \$194 to payment - \$1144 total
- 2nd Payment due 5/27/19 \$950 – Single supplement add \$194 to 2nd payment - \$1144 total
- 3rd Payment due 6/27/19 \$975 – (Single supplement add \$195 to 3rd payment - \$1170 total

The final payment (including Single Supplement fee) may be adjusted up or down depending on other fees or costs that may apply including those from the tour operator or from the Springfield Ski Club. Refunds or additional payment may be required if payment in full is received prior to the adjustment.

PASSPORTS:

AT SIGN-UP, SUBMIT A COPY OF THE FIRST PAGE OF YOUR PASSPORT WHICH SHOWS YOUR PICTURE, PASSPORT NUMBER, DATE OF BIRTH, ETC. WITH YOUR TRIP APPLICATION.

Passports must be valid for 6 months after the return date for international travel.



Buckingham Castle



Edinburgh Castle

Cancellation Dates/Fees:

- If you cancel by May 3, there is a \$25 SSC processing fee.
- If you cancel after May 3, your obligation is the full price of the trip.
- If a replacement is found by June 29, an adjustment may be possible.
- No refunds are given for unused portions of the package.
- ALL CANCELLATIONS ARE SUBJECT TO \$25 SSC PROCESSING FEE.
- TRIP INSURANCE IS STRONGLY RECOMMENDED

Grand Palladium White Sands Resort & Spa

QUINTANA ROO, MEXICO

February 1-8, 2020

TRIP LEADERS: Jennifer & Tim Shrake

217-698-5480

PRICE: \$1,990.00 perperson (double occupancy)

Maximum number of participants is 45.

Five Single Supplements are available at \$626.00 each.



TRIP INCLUDES:

- Round trip air transportation between St. Louis and Cancun
- Airport transfers, government taxes, fees, airline fuel surcharges included but subject to change
- Ground transportation to and from the Resort
- Seven nights at the all inclusive Grand Palladium White Sands Resort & Spa, Quintana Roo, Mexico

PAYMENTS:

Deposit at sign-up: \$665.00. Add \$210.00 for single supplement. Add \$135.00 if you want to purchase Apple trip insurance.

- 2nd Payment due 10/7/2019 – \$665.00. Add \$210.00 for single supplement.
- 3rd Payment due 11/7/2019 – \$660.00. Add \$206 for single supplement.

The final payment may be adjusted up or down depending on other fees or costs that may apply including those from the tour operator or from the Springfield Ski & Travel Club. Refunds or additional payment may be required if payment in full is received prior to the adjustment.

PASSPORTS:

AT SIGN-UP, SUBMIT YOUR TRIP APPLICATION AND A COPY OF THE FIRST PAGE OF YOUR PASSPORT WHICH SHOWS YOUR PICTURE, PASSPORT NUMBER, DATE OF BIRTH, ETC. YOUR TRIP APPLICATION MUST BE COMPLETED TO EXACTLY MATCH YOUR PASSPORT INFORMATION. Passports must be valid for 6 months after the trip return date for international travel.

• Cancellation Dates/Fees:

Cutoff Date – Cancel by September 13, 2019, and pay only the \$25 SSTC processing fee. After September 13, 2019, your obligation is the full price of the trip plus the SSTC fee.

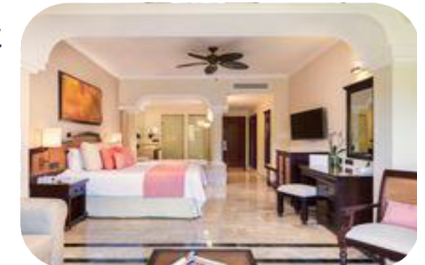
- No refunds will be given for unused portions of the package.
- All cancellations must be requested in writing. Contact the trip leader regarding any cancellation.
- **ALL CANCELLATIONS SUBJECT TO \$25 SSTC PROCESSING FEE.**

RESORT FEATURES:

- Oceanfront resort
- Nine 'à la carte' international restaurants plus buffets
- Six bars including swim-up bars
- Spa • Fitness center • Free WIFI
- Freshwater pools • Nightly shows • Daily activities
- Complimentary use of sister Palladium Resorts with free shuttle

ACTIVITIES:

- Volleyball
- Archery
- Soccer
- Fitness center
- Aqua gym
- Snorkeling
- Kayaking
- Catamaran
- Wind surfing
- Pedal boats
- Tennis
- Mini golf
- Scenic pontoon boat rides
- Dancing



Trip Insurance: The Springfield Ski & Travel Club strongly recommends the purchase of trip insurance covering accident, sickness or death of a participant or covered family member that would result in cancellation either prior to or during the trip. Apple Vacations offers insurance for \$135.00, but you may use other insurers as well. Trip insurance should be purchased as soon as possible to ensure complete coverage.

ADVENTURES IN PORTUGAL

March 22 – April 3, 2020 (13 days/11 nights)

TRIP LEADER: Mike Bloechle – 217/787-1010 or m.bloechle@comcast.net

PRICE: \$3,060.00 (land and air) – based on a minimum of 30 and maximum of 45 travelers

Single Supplement - \$699 added to the price of the trip – limit of 5

Land only – Price will be adjusted on the 3rd and 4th payments.

TRIP INCLUDES:

- Bus transportation to and from O'Hare Airport
- Air transportation to Porto and from Lisbon
- Airfare taxes, fees and fuel surcharges (subject to change)
- Airport transfers, government taxes, fees, airline fuel surcharges included but subject to change
- Motor coach transportation throughout the trip
- English speaking guide throughout the trip
- Three nights in Porto, two nights in Coimbra, two nights in Evora and four nights in Lisbon
- Four full-day and four partial-day tours
- Breakfast daily, one lunch and two dinners – welcome
- Welcome dinner in Porto and farewell dinner with Fado show in Lisbon
- Gratuities for guide in Portugal, bus drivers (Chicago and Portugal), hotel porters (one piece of luggage per person), and serving staff at included meals

PAYMENTS:

- Deposit at sign-up: Land & Air = \$765; Single Supplement = \$940
- 2nd Payment due 10/4/2019: \$765; single supplement = \$940
- 3rd Payment due 11/4/2019: \$765; single supplement = \$940
- 4th Payment due 12/4/2019: \$765; single supplement = \$939

The final payment (including land only and single supplement fees) may be adjusted up or down depending on other fees or costs that may apply including those from the tour operator or from the Springfield Ski and Travel Club. Refunds or additional payment may be required if payment in full is received prior to the adjustment.

PASSPORTS:

AT SIGN-UP, SUBMIT YOUR TRIP APPLICATION AND A COPY OF THE FIRST PAGE OF YOUR PASSPORT WHICH SHOWS YOUR PICTURE, PASSPORT NUMBER, DATE OF BIRTH, ETC. YOUR TRIP APPLICATION MUST BE COMPLETED TO EXACTLY MATCH YOUR PASSPORT INFORMATION.

Passports must be valid for 6 months after the trip return date for international travel.

INCLUDED ACTIVITIES: (entry fees included for these activities):

- Applicable entry fees are included for these activities.
- Walking tour of Porto
- Visits to Aveiro, Guarda, Tomar, Fatima, Obidos, Marvão
- Full-day excursion to Lamengo and the Quinta da Pacheca Winery (wine tasting and three-course lunch)
- University of Coimbra and Royal Palace (Coimbra)
- Marvão Medieval Village
- Cathedral and Cloisters of Évora
- Wine and olive tasting in Évora
- Capela dos Ossos (Chapel of Bones)/Royal Church of St. Francis (Évora)
- Belém Riverside District (Lisbon), 16th century Monastery of Jeronimos and Belem Tower
- Obidos Medieval Fortress
- Fado show with dinner
- Free time for shopping in Lisbon, Coimbra, Evora and Porto
- Visit to 12th century settlement built by the Knights Templar in Tomar

HOTELS (subject to change based on availability):

- Three nights in Porto at Carris Porto Riberia – Class 4*
- Two nights in Coimbra at Tivoli Coimbra Hotel - Class 4*
- Two nights in Evora at Vila Galé Evora - Class 4*
- Four nights in Lisbon at Mundial or Tivoli Oriente - Class 4*

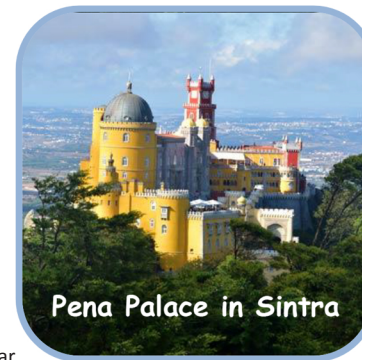
OPTIONAL TOURS

(Prices are in Euros and are approximations):

- Half-day excursion to Guimaraes (35€ per person)
- Douro River Cruise with wine/cheese tasting (40€ per person)
- Half-day excursion to the Conimbriga Ruins (18€ per person)
- Half-day Baixa District tour in Lisbon (26€ per person)
- Sintra excursion (60€ per person)



Obidos Medieval Castle



Pena Palace in Sintra

Cancellation Dates/Fees:

- Cutoff date – **September 13, 2019**, there is a \$25 SSTC processing fee.
- Between **September 14, 2019 and November 3, 2019** - \$300 per person.
- November 4, 2019 or after, YOUR OBLIGATION IS THE FULL PRICE OF THE TRIP.
- If a replacement is found by November 4, an adjustment may be possible.
- No refunds will be given for unused portions of the package and all cancellations must be requested in writing. Contact the trip leader regarding any cancellation.
- **ALL CANCELLATIONS ARE SUBJECT TO \$25 SSTC PROCESSING FEE.**

Trip Insurance: The Springfield Ski and Travel Club strongly recommends the purchase of trip insurance covering accident, sickness or death of a participant or covered family member that would result in cancellation either prior to or during the trip. Trip insurance is available from SmarTours for \$179 (<http://www.tripmate.com/wp394H>), but you can use other insurers as well. Trip insurance should be purchased as soon as possible to ensure complete coverage.

SPRINGFIELD SKI and TRAVEL CLUB
Membership Application
May 1, 2019 through April 30, 2020

Amount \$ _____

Date: _____

ID# _____

(Club Use Only)

(Mail the completed form along with your check to Springfield Ski Club, P.O. Box 1146, Springfield, IL. 62705)

Membership and Directory Information

Full Name _____ Category Individual Family S.K.I.

Address _____

City _____ State _____ Zip _____ - _____

Home Phone (____) ____ - ____ Cell Phone (____) ____ - ____

Email Address _____

New Renewal

Type

Check for listing in Club Directory Home Address Email Address Home Phone Cell Phone

All members will receive two printed full Snowjourners each year, and 10 electronically. If you want to continue to receive monthly Mark yes ____ or No _____. There will be a \$20 fee for monthly mailing. It is also available online at springfieldskiclub.org

Primary Membership Information

First Name _____

Membership and Dues – Non-Refundable

- \$20 monthly newsletter
- \$40 Individual (over age 21)
- \$50 Family (Spouses and Children under age 21)
- \$10 Reciprocal Membership (must be member of one of the following clubs (Indicate with a ✓)
 - Bloomington
 - Champaign
 - Peoria
- Lifetime Member (must be member for 25 consecutive years)

Club Interests (Check all that interest you):

- Board Member
- Activities (Party Chairperson, Volunteer at Parties)
- Membership (Volunteer at Sign Up Parties)
- Community Service (Volunteer at Charity Events)
- Trip Leader for Ski and/or Day Trips
- Sports Coordinator (Billiards, Bowling, Golf, Tennis)
- Are you a skier?
- Other _____

How did you discover our Club? (i.e., Friend, Website, Radio Ad, Club event) _____

Membership and Family Data:

Name of Each Individual (include yourself)	Birth Date MM/DD/YY	Adult/ Child	Sex	Single/ Married

Anyone 21 years of age and older is eligible for membership in the Springfield Ski Club. Family membership is one or two adults in the same household and their children. (See Bylaws, Article IV, pages 12 and 13 of the 2017 - 2018 Directory). This membership entitles you to membership in the Ski Council of Illinois (S.K.I.)